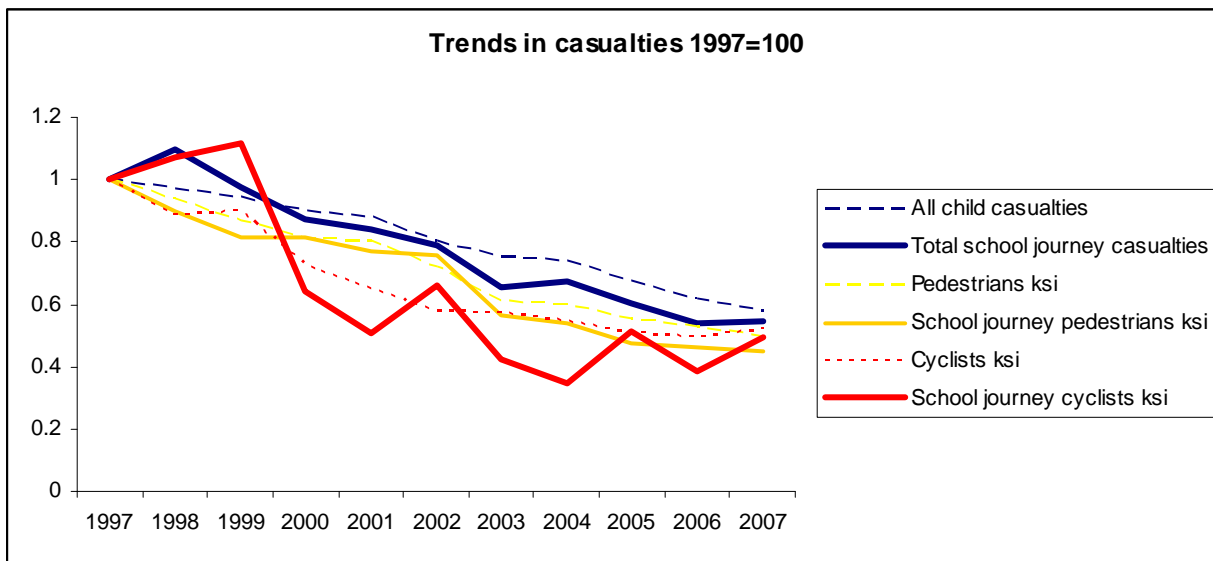


School journey casualties 2007

Trend in school journey fatalities

Overall, the number of child road casualties continues to fall. In 2007 29,332 children were killed or injured in road accidents, down from 31,314 the previous year. The number of child road fatalities also declined from 238 in 2006 to 174. Every mode - walking, cycling, car, bus and other modes - showed an overall casualty reduction.

In the past 10 years the number of children (aged 0 -16 years) killed or seriously injured on the school journey has fallen overall by more than half. However, school journey pedal cyclist casualties and fatalities are not following the general downward trends.



Unlike for child road casualties overall, in the past year the total number of children killed or injured on the school journey has increased from 4,385 to 4,411. Whilst the number of children killed and injured in cars travelling to and from school has continued to decline and has also fallen for school journey pedestrians; and on school buses/coaches has remained largely unchanged; the notable change is the rise in the number of children killed and injured cycling to and from school.

School journey casualties by severity and mode, 2006 & 2007, Great Britain

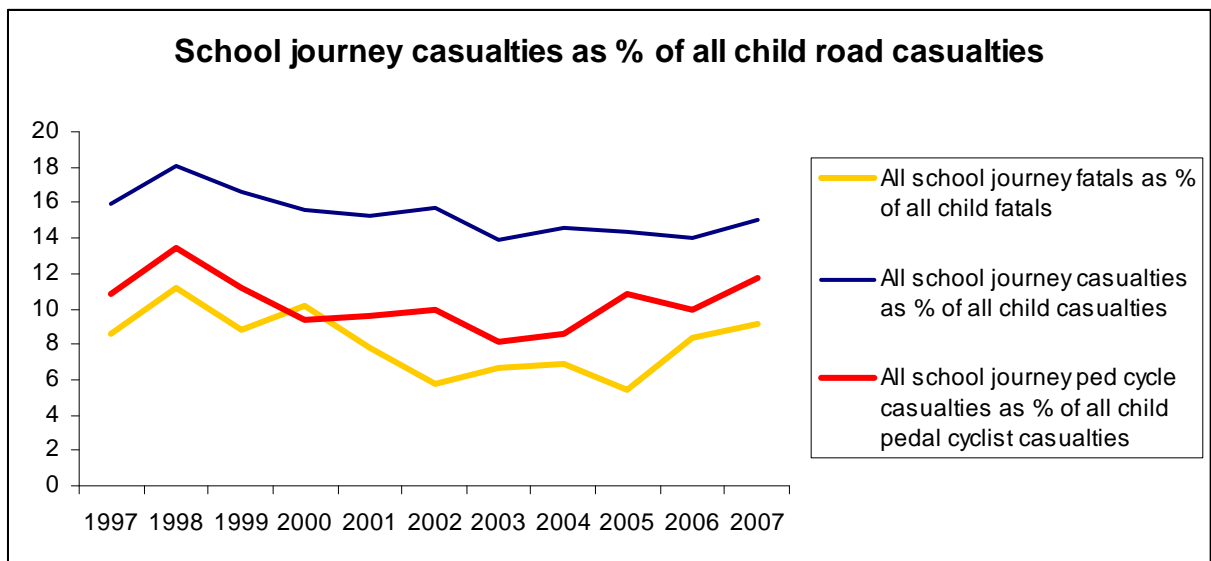
Mode	2006			All casualties	2007			All casualties
	Killed	Seriously Injured	Slight		Killed	Seriously injured	Slight	
Pedestrians	15	442	2287	2,744	10	432	2291	2733
Pedal cyclists	2	40	378	420	3	51	424	478
2 wheeled motor vehicle users	1	10	78	89	0	9	75	84
Car (inc taxis)	2	20	725	747	3	23	674	700
Minibus (inc motor caravan)	0	0	34	34	0	2	62	64
PSV(Bus and coach)	0	15	323	338	0	8	330	338
Rest	0	0	13	13	0	0	14	14
Total	20	527	3838	4,385	16	525	3870	4411

The school journey is now also accounting for an increasing proportion of child fatalities, serious injuries and overall road casualties, a trend since 2003.

In 2007 the school journey accounted for 9% of all child road casualty fatalities, the same proportion as in 1997, but up from 6% in 2002 and 2005. Overall, the school journey accounts for 15% of all child casualties - which has remained largely unchanged over the last decade, after an increase in 1998 to 18%.

Although the number of children killed and injured on pedal cycles on the school journey has fallen since the late 1990s, the school journey is now accounting for a higher proportion of the total child pedal cyclists killed and injured i.e. although fewer children are killed or injured on bikes, a higher proportion of those that are, are on the school journey.

In 2007 almost 20% of all child pedal cycle fatalities occurred on the journey to and from school. In 2000 the school journey accounted for less than 10% of child pedal cycle casualties, but this has been increasing since then and in 2007 12% of all child pedal cycle casualties overall happened on the school journey.



How the school journey compares

Pedestrians and pedal cyclists remain particularly vulnerable when compared to the proportion of journeys made on foot or by bike. Whilst fewer than half of all pupils (46%) walk to and from school, they account for 82% of those killed or seriously injured on the school journey.

Cycling accounts for about 2% of school journeys but 10% of those killed or seriously injured on the school journey. Buses, coaches and minibuses account for almost 20% of school journeys, but only 2% of fatal or serious school journey casualties.

% of journeys by mode and % of school journey casualties by mode, 2007

